



Aspern Grove NW3

Parkheath
Sold on Service





Aspern Grove, NW3

Asking Price £450,000, Leasehold Camden Band C

- Stylish 1 bedroom flat with balcony
- 14' bedroom
- Impressive 14' reception
- 10' semi-open plan kitchen
- 6' rear facing balcony
- 125 years from 2002
- Approaching 500 sq ft on first floor
- EPC energy rating C
- Set in modern local authority development
- Moments from all Belsize Park amenities



Belsize Park
208 Haverstock Hill
NW3 2AG
Sales 020 7431 1234
Lettings 020 7431 3104
nw3@parkheath.com

South Hampstead
8a Canfield Gardens
NW6 3BS
Sales 020 7625 4567
Lettings 020 7644 0800
nw6@parkheath.com

West Hampstead
192 West End Lane
NW6 1SG
Sales & Lettings
Tel 020 7794 7111
192@parkheath.com

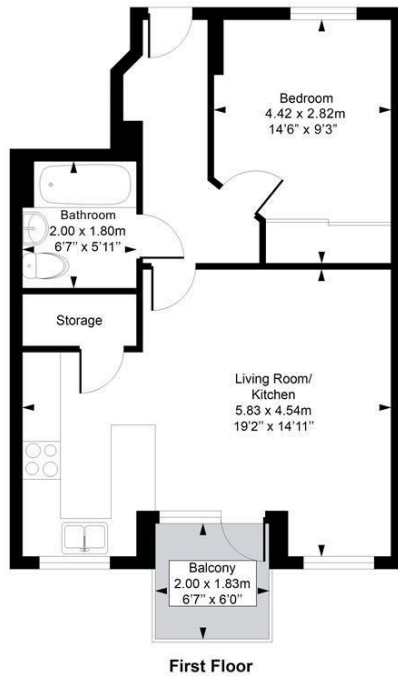
Parkheath
Sold on Service

Kentish Town
148 Kentish Town Rd
NW1 9QB
Tel 020 7485 0400
kt@parkheath.com

Kensal Rise
54-56 Chamberlayne Rd
NW10 3JH
Tel 020 8960 4845
kensal@parkheath.com

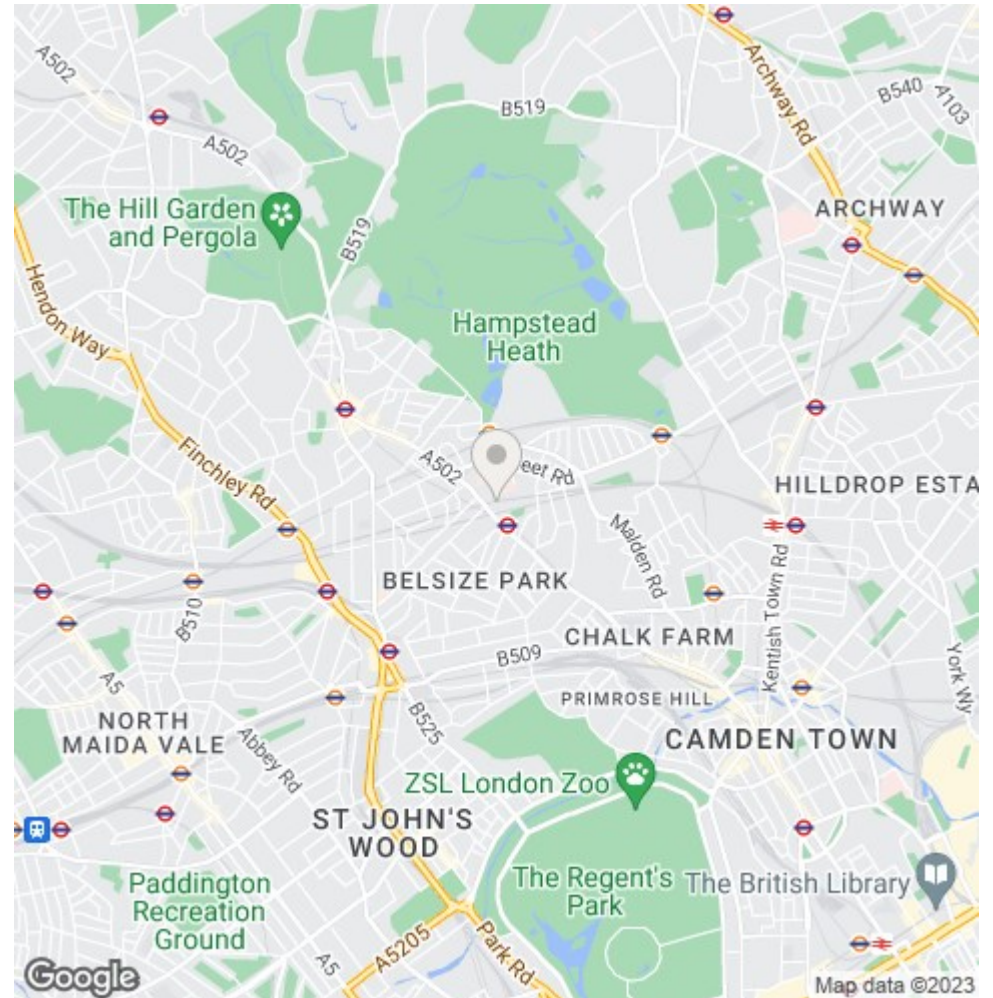
Property Management
148 Kentish Town Rd
NW1 9QB
020 7433 6174
pm@parkheath.com

Aspern Grove
Approximate Gross Internal Area = 497 sq.ft / 46.2 sq.m



This plan is for layout guidance only. Drawn in accordance with RICS guidelines. Not drawn to scale unless stated. Windows & door openings are approximate. Whilst every care is taken in the preparation of this plan, please check all dimensions, shapes & compass bearings before marking any decisions reliant upon them.

ELLIE CLAIRE PHOTOGRAPHY LTD
www.ellieclairephotography.com



The particulars do not constitute part of an offer or contract. The particulars, including text, photographs and plans, are for the guidance only of prospective purchasers/tenants and must not be relied upon as statements of fact. The descriptions provided therein represent the opinion of the author and whilst given in good faith should not be construed as statements of fact. Nothing in these particulars shall be deemed a statement that the property is in good condition or otherwise or that any services or facilities are in good working order. All measurements are approximate